

# Explore a Career in Social Work

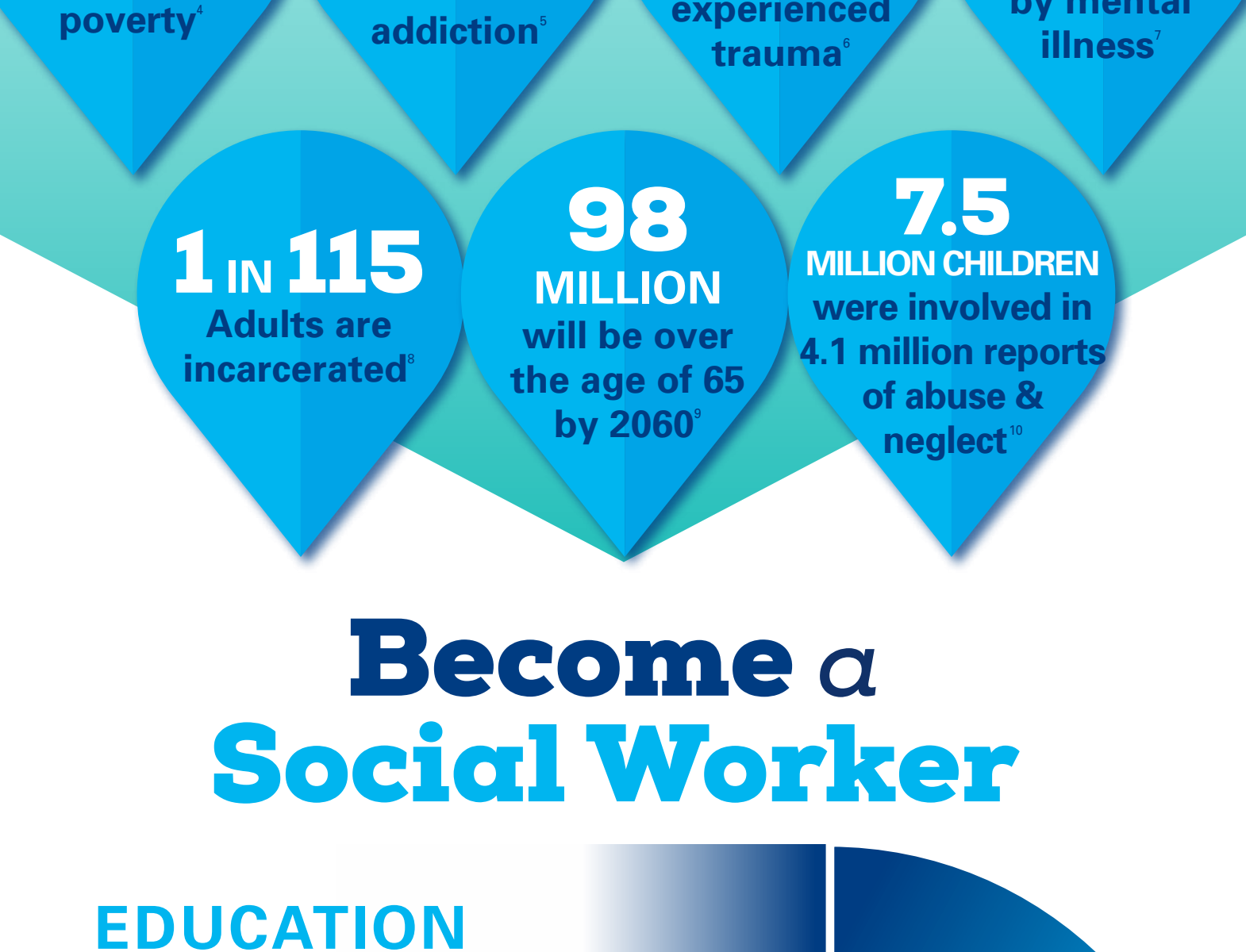
## What is Social Work?

Helping individuals, families, groups and communities solve and cope with problems to enhance social functioning and well-being<sup>1</sup>



## On the frontlines for Vulnerable Populations

ADDRESSING PRIVATE TROUBLES, PUBLIC ISSUES & THE UNDERSERVED



## Become a Social Worker

### EDUCATION PATHWAY



## YOU ARE NEEDED



## The Largest Employers OF SOCIAL WORKERS<sup>16</sup>



## Make A Difference



Chamberlain's new MSW degree program is aimed at preparing social work students to be agents of social change in their communities and throughout the world. The MSW degree program's culturally responsible curriculum prepares graduates to work with individuals, families, groups, organizations and communities in the context of healthcare, mental health and support services.

Visit [chamberlain.edu/msw](http://chamberlain.edu/msw) for more information.

1. Bureau of Labor Statistics, U.S. Department of Labor, Social Workers, On the Internet at <https://www.bls.gov/ooh/community-and-social-services/social-workers.htm#tab-2> (visited April 17, 2019).  
 2. Social Justice Solutions, <http://www.socialjusticesolutions.org/2013/01/15/the-definition-of-social-justice/>.  
 3. Creating a Culture of Peace, <http://creatingacultureofpeace.org/SocialChangeExamples.pdf>.  
 4. U.S. Census Bureau, [https://www.census.gov/research-results.html?Poverty&age=1&stateGeo=none&searchtype=white&sp=2019\\_chart\\_4118](https://www.census.gov/research-results.html?Poverty&age=1&stateGeo=none&searchtype=white&sp=2019_chart_4118).  
 5. Substance Abuse and Mental Health Services Administration, <https://www.samhsa.gov/data/sites/default/files/cbqg-reports/NCJ244920/NSDUHFR2017.pdf> (page 6).  
 6. FBI, <http://www.fbi.com/fbi/stats/2017-01-12/us-adult-incarceration-rate-declines-13-percent-in-5-years>.  
 7. National Institute of Mental Health, <https://www.nimh.nih.gov/health/statistics/mental-illness.shtml>.  
 8. Pew Charitable Trusts, <https://www.pewtrusts.org/en/research-and-analysis/articles/2017/01/12/us-adult-incarceration-rate-declines-13-percent-in-5-years>.  
 9. Administration for Community Living, <https://acl.gov/sites/default/files/Aging%20and%20Disability%20in%20America/2017/06/AmericansProfile.pdf> (page 1).  
 10. U.S. Department of Health & Human Services, [http://ncsv.org/images/HHS-Children%20Bureau\\_ChildMaltreatment2010.pdf](http://ncsv.org/images/HHS-Children%20Bureau_ChildMaltreatment2010.pdf) (page 8).  
 11. Social Workers Guide, <https://www.socialworkers.org/careers/>.  
 12. Social Work Guide, <https://www.socialworkguide.org/degrees/>.  
 13. Bureau of Labor Statistics, U.S. Department of Labor, Social Workers, On the Internet at <https://www.bls.gov/ooh/community-and-social-services/social-workers.htm#tab-4> (visited April 18, 2019).  
 14. Bureau of Labor Statistics, U.S. Department of Labor, Social Workers, On the Internet at <https://www.bls.gov/ooh/community-and-social-services/social-workers.htm> (visited April 17, 2019).  
 15. Bureau of Labor Statistics, U.S. Department of Labor, Social Workers, On the Internet at <https://www.bls.gov/ooh/community-and-social-services/social-workers.htm> (visited April 18, 2019). Data reflects a projected percentage change in employment from 2015-2025 and may not reflect local economic conditions.  
 16. Bureau of Labor Statistics, U.S. Department of Labor, Social Workers, On the Internet at <https://www.bls.gov/ooh/community-and-social-services/social-workers.htm#tab-3> (visited April 17, 2019).  
 17. Social Workers, <https://www.socialworkers.org/News/Facts/Social-Workers>.